



INSTRUCTION MANUAL >>

- Midlift
- Midlift&Tailift
- Standard



Table of Contents

Warnings & Symbol Identification	pg2
Section I: Product Description & Photo	
Midlift	pg3
Midlift&Tailift	pg3
Standard.....	pg3
Section II: Directions for Use	
How to Adjust Height of the Table	pg4
How to Adjust the Head-rest	pg4
How to Adjust the Tail-section	pg4
How to Use the Wheels	pg5
Section III: Troubleshooting	
The Table will not Change Height	pg5
Diagnose and Find the Problems.....	pg5
Foot Control Replacement Instruction	pg7
Motor Actuator Replacement Instruction	pg8
Control Box Replacement Instruction	pg9
The Tail-section will not Lock into Position.....	pg9
Section IV: How to Care for Your Upholstery.....	pg10



Warnings



Improperly setup, operated or maintained may cause personal injury.



To avoid this hazard: read and follow the instruction in this manual carefully.



Check the padding and upholstery when unpacking the table. Do not use it if there are signs of damage. (Our warranty excludes damage caused by improper set-up, accident, abuse, or use other than for the intended purpose)

Weight limit (including client and accessories):



- ★ The "Midlift" Lifting Capacity: 430lbs/195kgs
- ★ The "Midlift&Tailift" Lifting Capacity: 420lbs/190kgs
- ★ The "Standard" Lifting Capacity: 470lbs/215kgs

Be certain that the table is properly placed, without any tilt being present, prior to supporting a patient. Otherwise, the patient may lose balance and fall.

Electrical Shock Danger:



The power supply/control box is located below the table. For safety purpose, do not touching the power supply and control box when the table is in working. Get all the preparatory work well before the plug being connected to the power. Please refer to the instruction carefully before using it.

Do not put excessive weight or pressure on the Face Rest or Table Extender.

Do not expose the product to the extreme moisture or temperature.



These tables weigh up to 180.5Lbs/82kgs.

CAUTION

Do not lay the table sidely without taking any protective measures..



Under any circumstance, forbid going under the table or the scissor-shape structure in case of any personal injuries caused by the collapse of the table

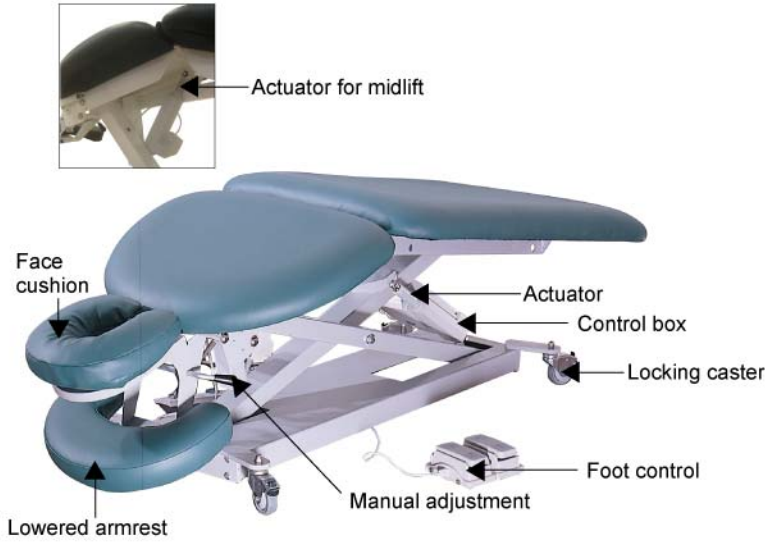


Keep the massage table away from children and pets, children and pets are prohibited from approaching the scissors-shape base, in cause of the electric shock accidents and personal injuries caused by the table collapse



Do not leave or storage any stuff inside the scissors construction of the table or underneath the table top

Item: Midlift



Lifting Capacity	430lbs/195kgs Distributed load
Weight	176lbs/80kgs
Height Ranges	20.4"(52cm)-38.3"(97.5cm)
Widths	27"(69cm) 28"(70cm) or 30"(75cm) available
Length	75"/190cm (Including headrest)
Padding	2.5" or 3"foam thickness
Upholstery	PU or PU available

Item: Midlift&Tailift



Lifting Capacity	420lbs/190kgs Distributed load
Weight	180.5lbs/82kgs
Height Ranges	20.4"/52cm-38.3"/97.5cm
Widths	27.5"/(69cm) 28"(71cm) or 30"(75cm) available
Length	75"/190cm (Including headrest)
Padding	2.5" or 3"foam thickness
Upholstery	PVC or PU available

Item: Standard



Lifting Capacity	470lbs/215kgs Distributed load
Weight	167.5Lbs/76kgs
Height Ranges	20.4"/52cm-38.3"/97.5cm
Widths	27"/(69)cm 28"(71cm) or 30"(75cm) available
Length	76.7"/195cm (Including headrest)
Padding	2.5" or 3"foam thickness
Upholstery	PVC or PU available

How to Adjust Height of the Table

The Standard table comes with a Foot-control to operate the tables' height

The Midlift table and the Midlift&Taillift come with Double-foot-control, one answers for the table height adjustment ,one answers for the midlift function

Foot-control:

Operate the Foot-control as shown below to raise or lower the height of the table. When operating the table's controls, be sure to observe all cautions and warnings as given in the manual.



How to adjust the Headrest

To raise the headrest , please grasp the headrest firmly and pull upwards for your desired angle. The headrest will lock firmly automatically.

To lower the headrest,please turn the release-handle upward,hold the headrest slightly and lower it to the desired angle. Release the handle when the headrest is lowered to the required level and the headrest will be locked automatically



How to adjust the Tail Section

To raise the tail section from a flat position, grasp the tail section firmly and push or pull upwards until the desired angle is got. The tail-section will automatically lock into this position when you release your hold. To increase the angle, merely repeat the action until the height is in the desired position.



To adjust the tail section downwards, be sure you have a firm hold on the tail section and turn the release-handle upward as you guide the tail section down. Please maintain a firm hold on the tail section as you lower it. Release the handle when you have the tail section at the required level and the handle will lock automatically in position.

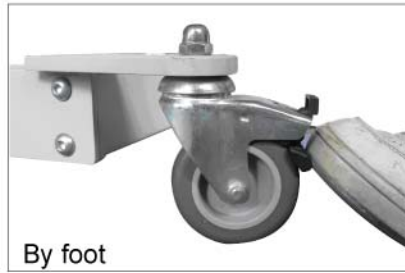


How to Use the Wheels

The Midlift / Midlift&Tailift/Standard massage table is equipped with two locking-wheels at each side.



By hand



By foot



1. Place the table in the location where you plan to use it.

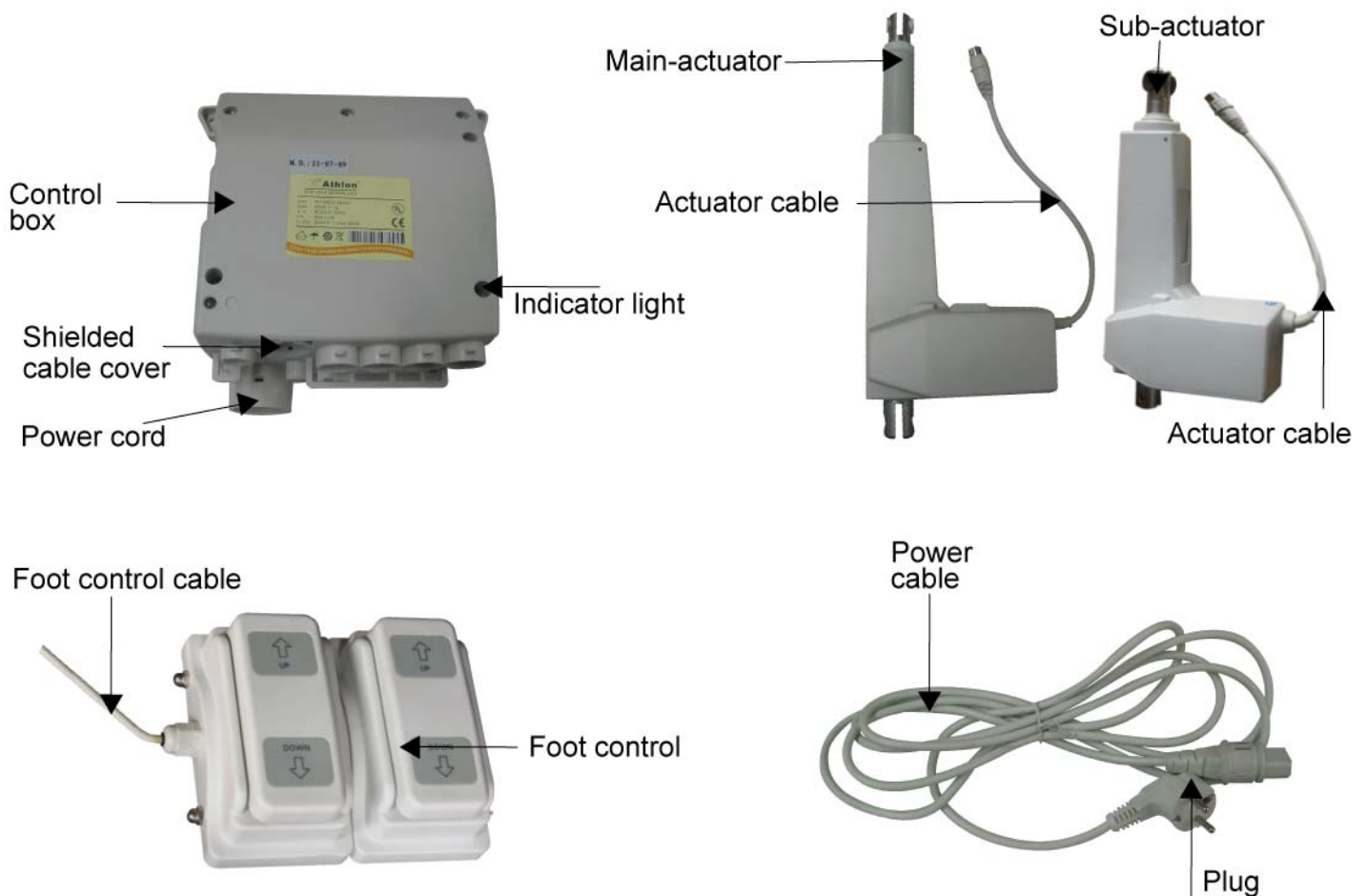
2. To lock the wheels, press the plastic button downward by hand or foot .

3. Release the plastic button when moving the table (we recommend to do this step by foot).

The Table will not Change Height

Diagnose and Find the Problem:

The motor structure as below:

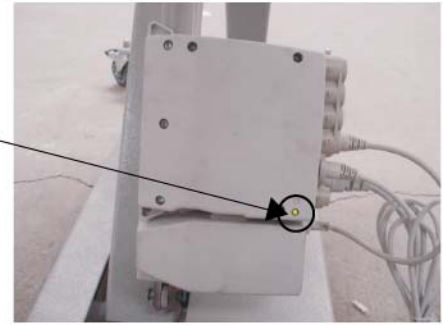


Note:

Make sure that all male and female connectors are firmly pushed into each other. Even a slight misconnection can cause a malfunction.

1. The indicator-light is not on:

The indicator light



Check the outlet to be sure that it has power and the cable is plugged in.



1st step: unplug the power cable from the wall outlet

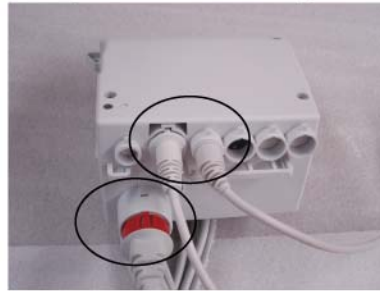


2nd step: Get a new power outlet which has a definite power supply, plug the power plug into the new power outlet.

Check the control-box to make sure the power-cable is firmly connected to the control box.



Good connection



Poor connection



Unplug the power cable from the control-box, then plug in again.

Result: If the indicator light is still not on after carrying out the above process, it means the control box is damaged and need replacement (refer to manual 'Control-box Replacement Instructions')

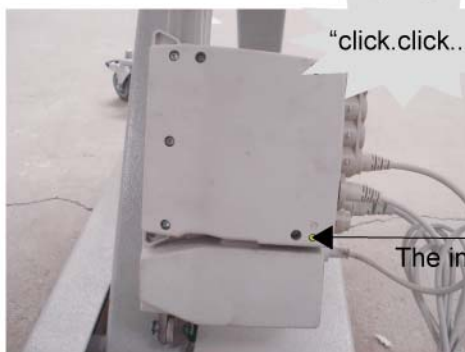


CAUTION

The table weighs as much as 80kgs. Use extreme caution if turning the table on its side. Seek assistance to ensure safe operation!

2. The indicator light is on, but the table still can not change height:

Move the table to a quiet area, try the foot-control. Listen: both the control-box and the foot-control should sound "click" when you step on the foot-control.



Keep power on, the control-box should "click", when you step on the foot-control.



Keep power on, the foot-control should "click", when you step on the foot-control.

Result1:if there is no corresponding “click” within the Foot-control, it means the Foot-control is damaged and will need to be replaced. (Refer to manual “Foot-control Replacement Instructions”)

Result2:if the power is on and the indicator-light is on, but the control-box does not “click” when you press the foot-control, firstly ensure the foot-control-cable is properly connected to the control box. If the connection is solid, it means the control-box is damaged and need replacement. (Refer to manual “Replacing Control-box instructions”)



The foot-control-plug is at the end of the cable.
The socket is on the control-box.



Good connection

Result3:if the table will still not change height after carrying out the above processes, the indicator is on, both control-box and foot-control “click” when you press the foot-control and all cables have a solid connection, it means that the actuator is damaged and needs replacement.

PS: You will have a 3 years’ guarantee for the Actuator (including the Motor Actuator and the Control-box) from the date of purchase.

Please contact the retailer or wholesaler to apply a new replacement if the table does not work after the above diagnosis.



CAUTION

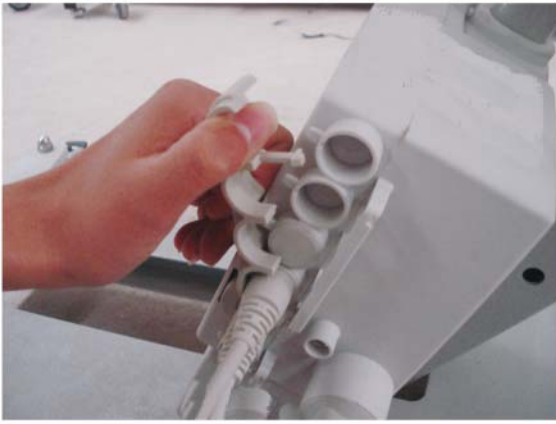
Before doing any work on the unit, disconnect the power cord from the power outlet!

Foot Control Replacement Instruction

Replacement of the foot-control will be necessary if the foot control does not activate the elevation function.

To Replace the Foot Control, Follow these steps:

1. The foot-control is connected directly into the control box by foot-control-cable,remove the shield cable cover from the control-box and remove the foot-control-plug from the foot-control-socket by pulling them firmly until fully disconnected.



Remove the shielded cable cover



Unplug the foot-control-plug

2. Obtain the new foot-control.

3. Install the new foot-control by connecting the control's plug to the control box socket and re-cover the shielded cable plug.

Motor Actuator Replacement Instruction

1. Disconnect the power cord from the power outlet.

Lock the table's four wheels, carefully turn the table on its side. As a safety precaution, it's highly recommended that assistance by another person is utilized when turning the table on its side.



Turn the table on it's side



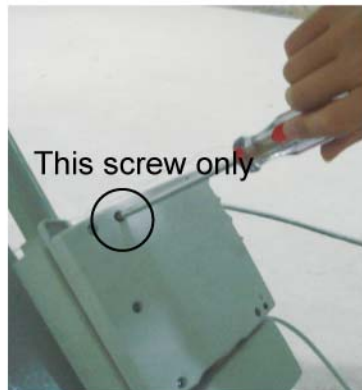
Remove the shielded cable cover

2. Remove the actuator cable from the control-box



Remove the actuator cables from the control-box

3. Split the control-box and the main actuator apart if you replace the main actuator motor. Do not do this step if you replace sub-actuator motor



Loosen and remove the connecting screw using a screw-driver



Slide the control-box upward to split it form the main actuator

4. Remove the clamp spring by forceps at both end of the actuator.



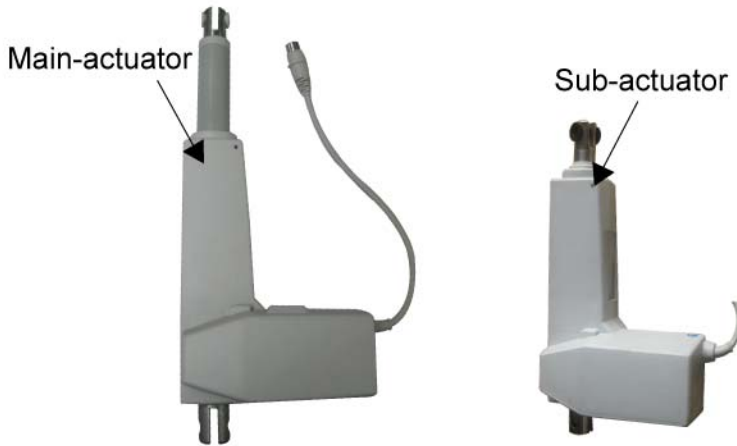
The clamp-spring at both-end of the main actuator

The clamp-spring at both-end of the sub actuator (the actuator for the midlift)



Remove the clamp spring and the bolt

5. Remove the actuator form the table.



Remove the actuator form the table

6. Obtain the new actuator.

7. Install the new actuator using these instructions in reverse.

Control Box Replacement Instruction

Refer to manual "Motor Actuator Replacement instruction" step 1.2.3

1. Obtain the new control-box.
2. Install the new control-box.

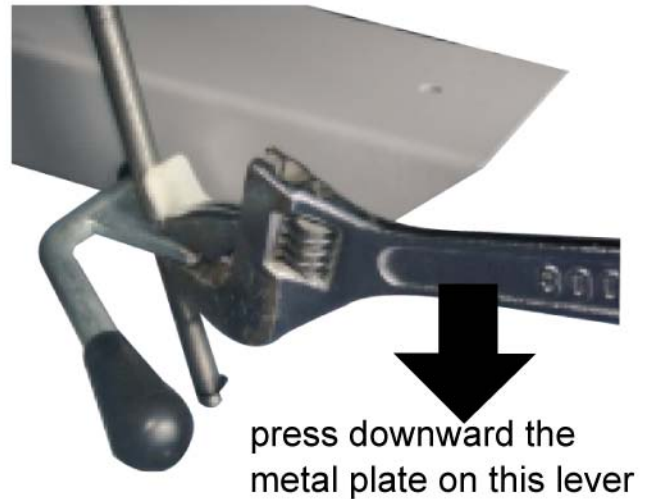
The Tail-section will not Lock into Position

When the tail section can not lock into position, due to the bar on one side slipping, it can be repaired as follows:

1. When the bar is loose on one side (the red highlight signal): Please use a spanner to pull downward the metal plate of the level on the other side

- ① If the tail section appears this side slipping, then you need to adjust the metal plate of the lever on the other side
- ② Adjust the metal plate of this side





2. Test the tail section. If one side is still loose, adjust the lever on the other side and repeat this procedure until both bars support the tail section equally.



How to Care for Your Upholstery Fabric

Congratulation on your table purchasing. In order to maintain your products' quality and ensure the life of your table, we have tested several preventative steps you can take to protect the upholstery on your table and accessories.

Here are a few suggestions in caring for your upholstery fabric:

- Avoid storing your table in extreme cold temperatures since excessive coldness will cause cracking. So please do not let your table in the unheated areas during cold weather.
- Avoid storing your table in extreme heat temperatures since excessive heat will cause the upholstery to stretch and puckering. So be sure your table is away from heaters, electrical appliances, direct sunlight and the inside of your car during hot weather.
- Protect your table and accessories with sheets and fleeces. We offer three-piece 100% Cotton Flannel Sheet Set and Fleece Sheet Set against oil stain while 100% comfort to your clients.
- Clean your upholstery fabric everyday

We recommend cleaning your upholstery fabric with a mild detergent to protect it against oil stains and dirtiness, which will cause cracking and permanent stains over time. Common practice is to mix small anti-bacterial dish soap with water in a spray bottle and wipe down the table and then followed by the clean wet towel.

- Protecting your table from general abrasions, cuts and punctures



CAUTION

1. Rubbing alcohol will dry out the vinyl causing it to crack..
2. Prolonged exposure to temperature extremes may cause damage to vinyl
3. The moist weather will shorten the actuator life, leaving it away from the water.